

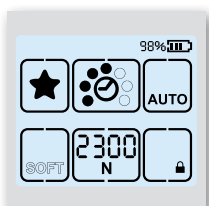
OR-T 670

TECHNICAL DATA SHEET

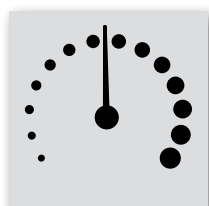
Hand Tool for Plastic Strapping



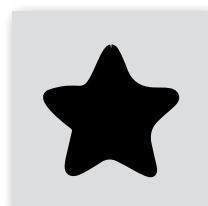
FEATURES



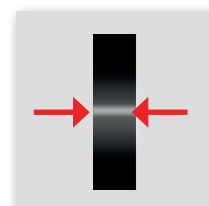
■ **Full touch user interface**
for easiest adjustment of
parameters and tool status
information for operator



■ **Variable tension speed**
controlled by finger pressure
for sensitive packages



■ **Favorite strapping function**
for quick one touch switch of
tool settings for varying packages



■ **Strap alignment indication**
to ensure that strap is inserted
correctly for higher process
security



Strapping tool		OR-T-670
Operation mode		auto / semi / manual
Tension force range	Standard	3000 – 7000 N
	Soft	1000 – 5000 N
Variable tension speed range		0 – 100 mm/s
Weight (incl. battery)		6.7 kg
Dimension (L x W x H)		416 x 157 x 158 mm
Working temperature		-10°C to +40°C
Relative humidity		up to 90%
Sealing (joint type)		friction weld seal
Joint strength*		up to 75 – 85%
*Value depends on strap quality		
Battery / charger		
Charger type		Bosch
Battery charger voltage		100 or 110 or 230 V
Charging time		70 – 80 min
Battery type		Bosch Li-Ion ProCORE 18V, 8.0Ah
Cycles per battery charge		
■ Low tension		450
■ Medium tension		350
■ High tension		250
Strap		
Strap		PET (Polyester)
Width		25, 32 mm
Thickness		PET 0.9 – 1.3 mm
Features		
Real time indication of applied tension force		•
Variable tension speed		•
Favorite strapping function		•
Display color indication for tool status information		•
Strap alignment indication		•
Strap dust blow out vent		•
Battery protection		•
0–Tension welding		•

ACCESSOIRES



- **User interface cover**
for additional protection in harshest environment



- **Protection plate**
for usage on abrasive surfaces



- **Suspension bow**
for stationary applications

